

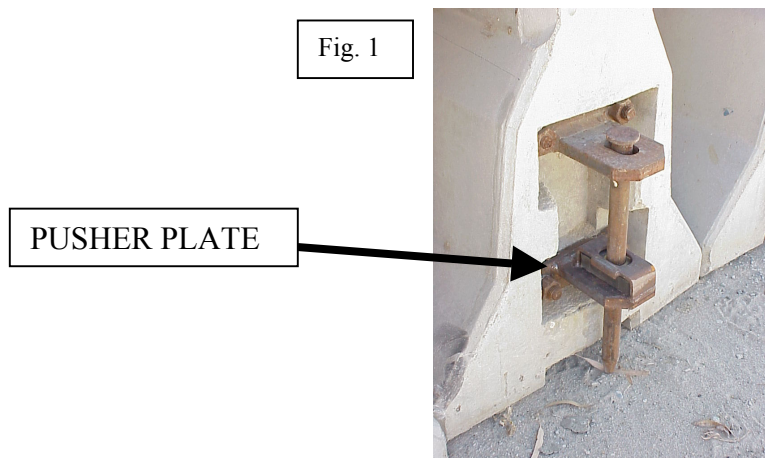
**TECHNICAL
BRIEF**

180 River Road • Rio Vista, CA 94571 • Tel 707-374-6800 • Fax 707-374-6801
Email: info@barriersystemsinc.com • Website: barriersystemsinc.com

STACKING BARRIER

The following is a guideline for shipping and stacking barrier in the storage yard.

- The barrier must be pinned together in two's. Do not attempt to handle more than two barriers, one pair, at a time.
- Do not ship rejected barriers. Call Barrier Systems, field service, for a barrier inspection at least two weeks prior to shipping barrier. The barrier will be inspected and rejects will be marked at that time.
- Remove all reflectors or reflectorized tape that has been attached to the barrier.
- Remove any objects that were attached to the barrier.
- One barrier pin is left in the end hinge that has the pusher plate holder. Insert the barrier pin through the hinge and the pusher plate. If the pin is visibly damaged it must be replaced. There is no pin left in the opposite end of the barrier pair.



- The barrier should be stacked with a forklift and Barrier Systems supplied barrier-lifting device. **The protective pads installed on the lifting device must be in place.** Otherwise damage can be caused to the barrier that could result in charges to the customer.

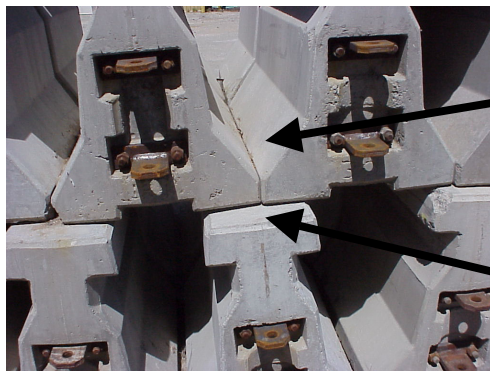
- Stack the barrier, three rows high, see fig. 2. Make sure that all of the barriers are facing the same direction. When stacked the bottom edges of the barrier should touch the adjoining barrier bottom edges, see fig. 3.
- The location where the barrier is stacked should be a level, hard packed surface that has adequate drainage.
- The barrier rows should be as straight as possible.

Fig. 2

Barrier stacked
3 high



Fig. 3



Bottom edges should touch
the adjoining barrier.

Bottom edge centered
over row below.

- Leave about 1 ½ feet between rows of barrier.

NOTE: the customer will be charged for missing barrier pins and pusher plates.