

**TECHNICAL  
BRIEF**

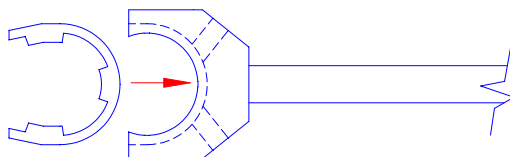
180 River Road • Rio Vista, CA 94571 • Tel 707-374-6800 • Fax 707-374-6801  
Email: info@barriersystemsinc.com • Website: barriersystemsinc.com

**E-CLIP INSTALLATION**  
(Permanent System Applications)

After the barrier hinge pins are installed an E Ring Collar and three “E” clips must be installed on the hinge pin. Barrier Systems part number B960424 is the tool for installing “E” Clips.

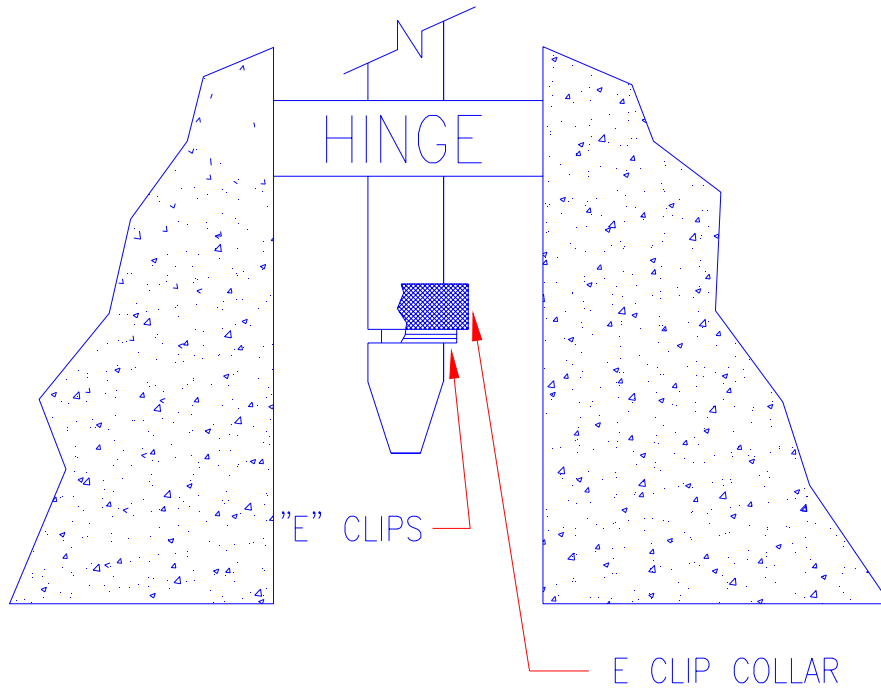
The installation of the collar and the “E” clips are as follows.

- Separate the clips in-groups of three and align the stack of clips in the same direction.
- Place one of the stacks on top of the barrier at each hinge joint.
- After the clips are on the barrier another person can then insert the clips into the tool. See sketch below.



- The tool is used to hold the clips during the installation.
- Slide the E Clip collar onto the bottom of the hinge pin and slide it upward past the groove in the lower portion of the pin. Hold the collar in place until the “E” clips are installed.
- Align the clips into the groove on the hinge pin and tap the end of the tool with your hand.
- Release the E Clip Collar. The collar will slide downward.
- The tool can now be pulled away leaving the clips attached to the hinge pin.
- With your hand spin the clips to insure that they are seated. Also they should be spun where they are not in alignment with each other.

The below sketch shows the final placement of the "E" clips and the E Clip Collar.



**NOTE:**

Three "E" Clips and One Collar must be installed on each barrier pin.